

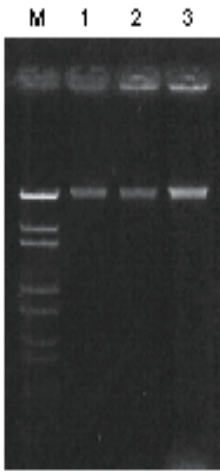
ISOPLANT

从植物·酵母·细菌抽提 DNA 试剂盒

从酵母抽提 DNA

Data 1. 提取 DNA 的回收量及纯度

	yeild ($\mu\text{g/g}$)	A260/280
<i>Saccharomyces cerevisiae</i>	0.504	1.83
<i>Shizosaccharomyces pombe</i>	0.348	1.79
<i>Phichia pastoris</i>	2.523	1.87



lane 1: *Saccharomyces cerevisiae*
lane 2: *Shizosaccharomyces pombe*
lane 3: *Phichia pastoris*
M: Marker 6 (λ Sty I digest)