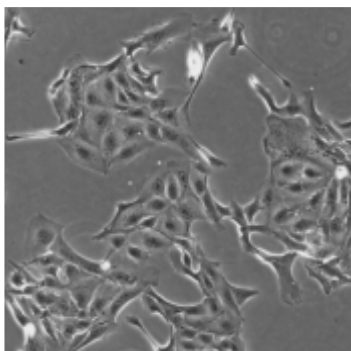


## cellnest, recombinant peptide based on human collagen type I <Example of usage>



Cell name : **MDCK**  
Culture time : 24 hours  
Number of seeded cells:  $2.4 \times 10^5$  cells/well  
Plate : Falcon™ Tissue Culture Plates,  
6 Well (Not Treated)  
Culture conditions: With serum (10% FBS)

### [Preparation]

- cellnest, recombinant peptide based on human collagen type I 0.1% solution (hereinafter: “cellnest”)
- Plate: Falcon™ Tissue Culture Plates, 6 Well (Not Treated) (#351146)

### [Protocol]

#### -Plate coating-

- (1) Take the cellnest out of the refrigerator and dispense 14 mL of cellnest into a tube.
- (2) Incubate the tube for 10 min. in a water bath at 37°C.
- (3) Add 2 mL of the solution in Step (2) to each well.
- (4) Keep it for 2 hours in a 37°C incubator.
- (5) Take the plates out of the incubator and remove the solution in a clean bench.
- (6) Add 3 mL of PBS (-) to each well and remove the solution after 30 min. incubation time
- (7) Repeat Step (6) three times.
- (8) From here on, follow routine cell culture protocol.