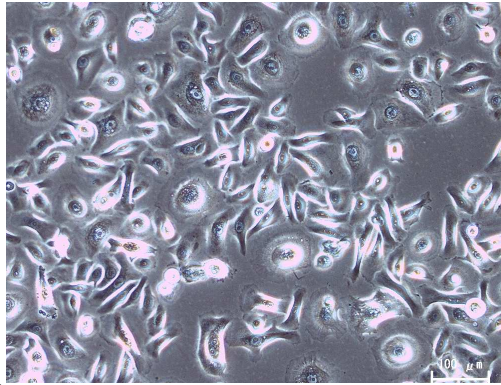


cellnest, recombinant peptide based on human collagen type I <Example of usage>



Cell name : NHEK
Culture time : 24 hours
Number of seeded cells: 5.0×10^5 cells/dish
Plate : Falcon™ Tissue Culture
Petri Dish, 60 mm (Not Treated)
Culture conditions : Includes BPE

[Preparation]

- cellnest, recombinant peptide based on human collagen type I 0.1% solution (hereinafter: "cellnest")
- Plate: Falcon™ Tissue Culture Petri Dish, 60mm (Not Treated) (#351007)

[Protocol]

-Plate coating-

- (1) Take the cellnest out of the refrigerator and dispense 14 mL of cellnest into a tube.
- (2) Incubate the tube for 10 min in a water bath at 37°C.
- (3) Add 4.3 mL of the solution in Step (2) to each 60 mm dish.
- (4) Keep it for 2 hours in a 37°C incubator.
- (5) Take the dishes out of the incubator and remove the solution in a clean bench.
- (6) Add 13 mL of PBS (-) and remove the solution after 30 min. incubation time
- (7) Repeat Step (6) three times.
- (8) From here on, follow routine cell culture protocol.